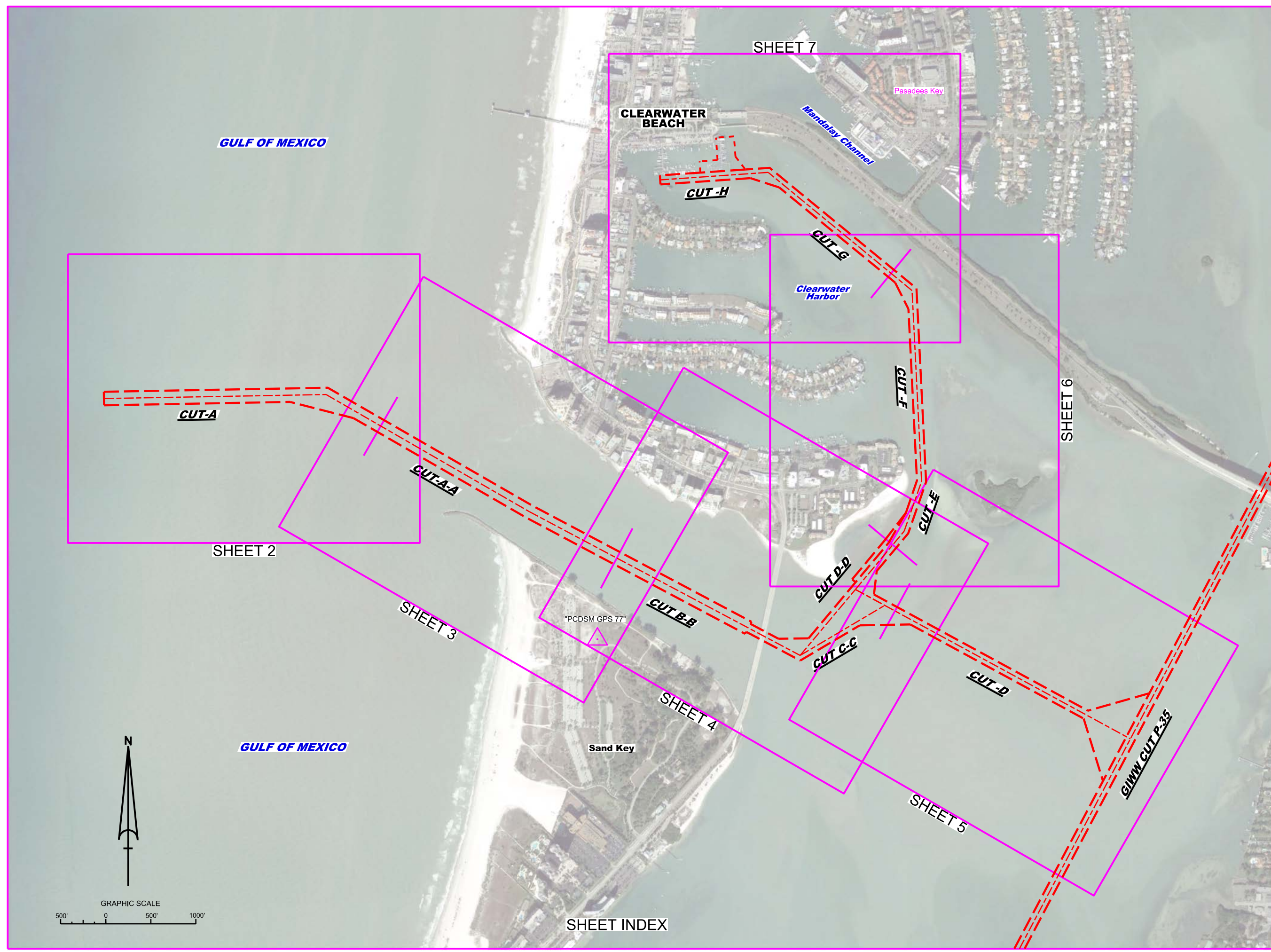


# CLEARWATER PASS PINELLAS COUNTY, FLORIDA PROJECT CONDITION SURVEY FY23 8 AND 10-FOOT PROJECT



### SURVEY NOTES

- REFER TO SURVEY NO. 23-054.
- DEPTHS DEPICTED BY THIS SURVEY ARE REFERENCED TO MEAN LOWER LOW WATER (MLLW) AS REPORTED BY THE NATIONAL OCEANIC AND ATMOSPHERIC ADMINISTRATION (NOAA). NOAA'S VDATUM MODEL WAS USED AND CALIBRATED TO THE PUBLISHED MLLW HEIGHTS OF THE BENCHMARKS ASSOCIATED WITH THE TIDE GAGE SITE SPECIFIED BELOW:  
NOAA TIDAL STATION "AWL USE" FOR ENTIRE PROJECT (PID: AG0307)
- TIDAL REDUCTIONS WERE OBTAINED UTILIZING A REAL-TIME KINEMATIC (RTK) GPS AND REFERENCED TO MLLW UTILIZING A HYPACK KINEMATIC TIDE DATUM (KTD) MODEL NAMED "SPC-FL-WEST-2010-12-07.KTD".
- ALL ELEVATIONS ARE BELOW THE CHART DATUM UNLESS PRECEDED BY A (+) SIGN.
- PLANE COORDINATES ARE BASED ON THE TRANSVERSE MERCATOR PROJECTION FOR THE WEST ZONE OF FLORIDA AND REFERENCED TO NORTH AMERICAN DATUM OF 1983 (NAD83).
- ALL STATIONING REFERS TO THE CENTERLINE OF THE CHANNEL.
- THIS SURVEY WAS PERFORMED USING REAL-TIME KINEMATIC (RTK) GPS POSITIONING WITH THE FOLLOWING REFERENCE BASE LOCATION:  
REFERENCE BASE LOCATED AT "PCDSM GPS 77" (PID: DF5856)
- VERTICAL MEASUREMENTS WERE MADE USING AN ECHOTRAC E20 DUAL-FREQUENCY 28/200 KHZ SINGLE-BEAM TRANSDUCER AND AN EDGETECH COMBINED MULT-BEAM AND SIDESCAN. ALL SOUNDINGS SHOWN ARE IN HIGH FREQUENCY.
- VESEL: SB-44      DATE OF SURVEY: 11 DEC 2022      CUT: ALL CUTS
- AIDS TO NAVIGATION WERE LOCATED DURING THIS SURVEY.
- THE INFORMATION DEPICTED ON THIS MAP REPRESENTS THE RESULTS OF SURVEYS MADE ON THE DATES INDICATED ABOVE AND CAN ONLY BE CONSIDERED AS INDICATING THE GENERAL CONDITIONS AT THAT TIME. THIS CHART IS SOLELY FOR THE DISTRIBUTION OF AVAILABLE DEPTHS AT THE TIME OF THE SURVEY.
- SURVEY ACCURACY PERFORMANCE STANDARDS, QUALITY CONTROL, AND QUALITY ASSURANCE REQUIREMENTS WERE FOLLOWED DURING THIS SURVEY IN ACCORDANCE WITH USACE EM 1110-2-1003, HYDROGRAPHIC SURVEYING, 30 NOV 2013.

LEGEND	
	MONUMENT
	LIGHTED BEACON
	GREEN DAYBEACON
	RED DAYBEACON
	RED LIGHTED BUOY
	GREEN LIGHTED BUOY
	CAN BUOY
	NUN BUOY
	TIDE STAFF
	PROJECT DEPTH

US Army Corps of Engineers  
Jacksonville District  
SAFETY ON THIS JOB  
DEPENDS ON YOU

---

DEPARTMENT OF THE ARMY  
JACKSONVILLE DISTRICT, CORPS OF ENGINEERS  
JACKSONVILLE, FLORIDA

---

PROJECT CONDITION SURVEY FY23  
8 AND 10-FOOT PROJECT  
INDEX, LOCATION AND VICINITY  
MAP

---

Scale: AS SHOWN

Drawing no.  
**1**

---

SHEET 01 OF 07



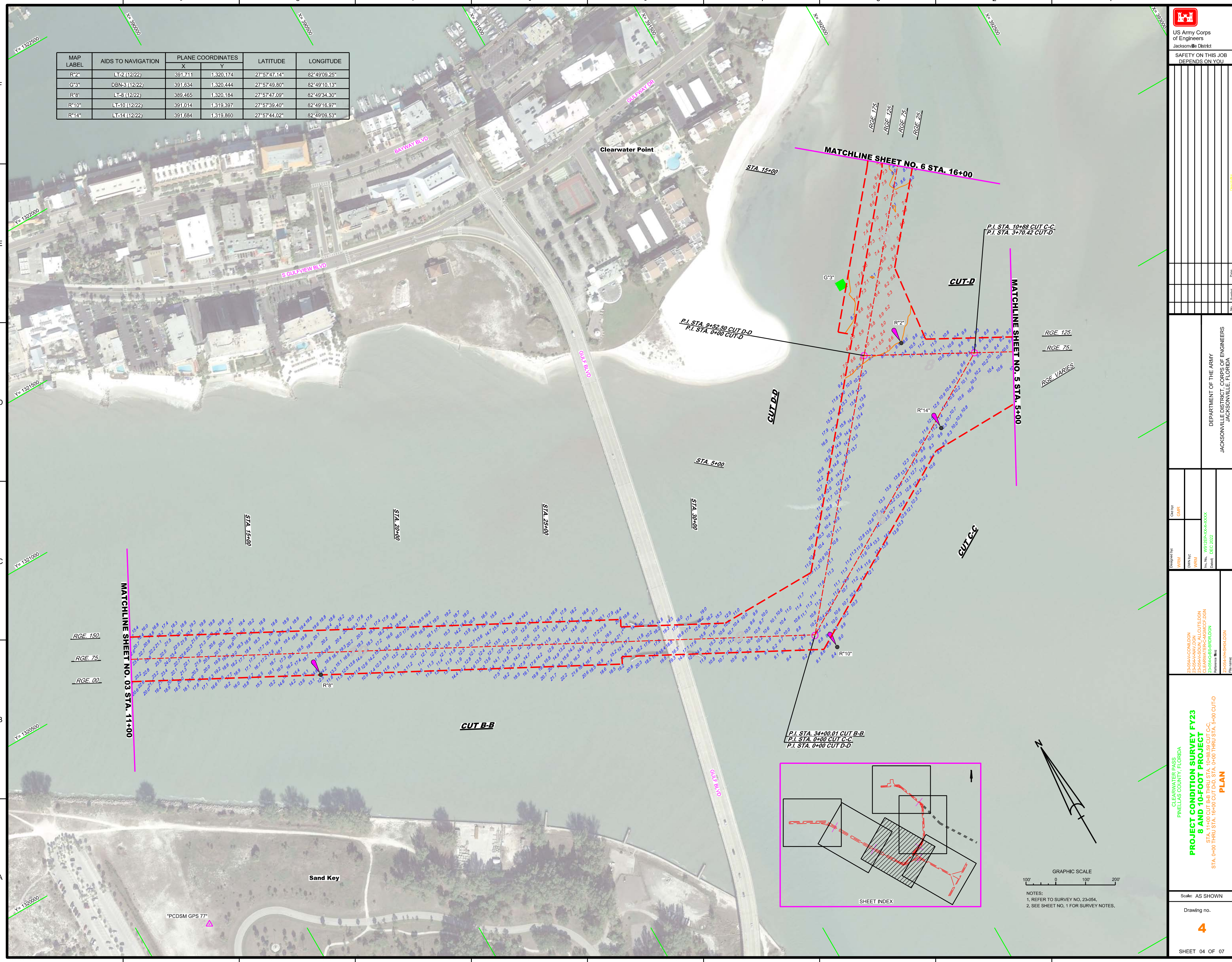








MAP LABEL	AIDS TO NAVIGATION	PLANE COORDINATES		LATITUDE	LONGITUDE
		X	Y		
R*2"	LT-2 (12/22)	391,711	1,320,174	27°57'47.14"	82°49'09.25"
G*3"	DBN-3 (12/22)	391,634	1,320,444	27°57'49.80"	82°49'10.13"
R*8"	LT-8 (12/22)	389,465	1,320,184	27°57'47.09"	82°49'34.30"
R*10"	LT-10 (12/22)	391,014	1,319,397	27°57'39.40"	82°49'16.97"
R*14"	LT-14 (12/22)	391,684	1,319,860	27°57'44.02"	82°49'09.53"



NOTES:  
1. REFER TO SURVEY NO. 23-064.  
2. SEE SHEET NO. 1 FOR SURVEY NOTES.

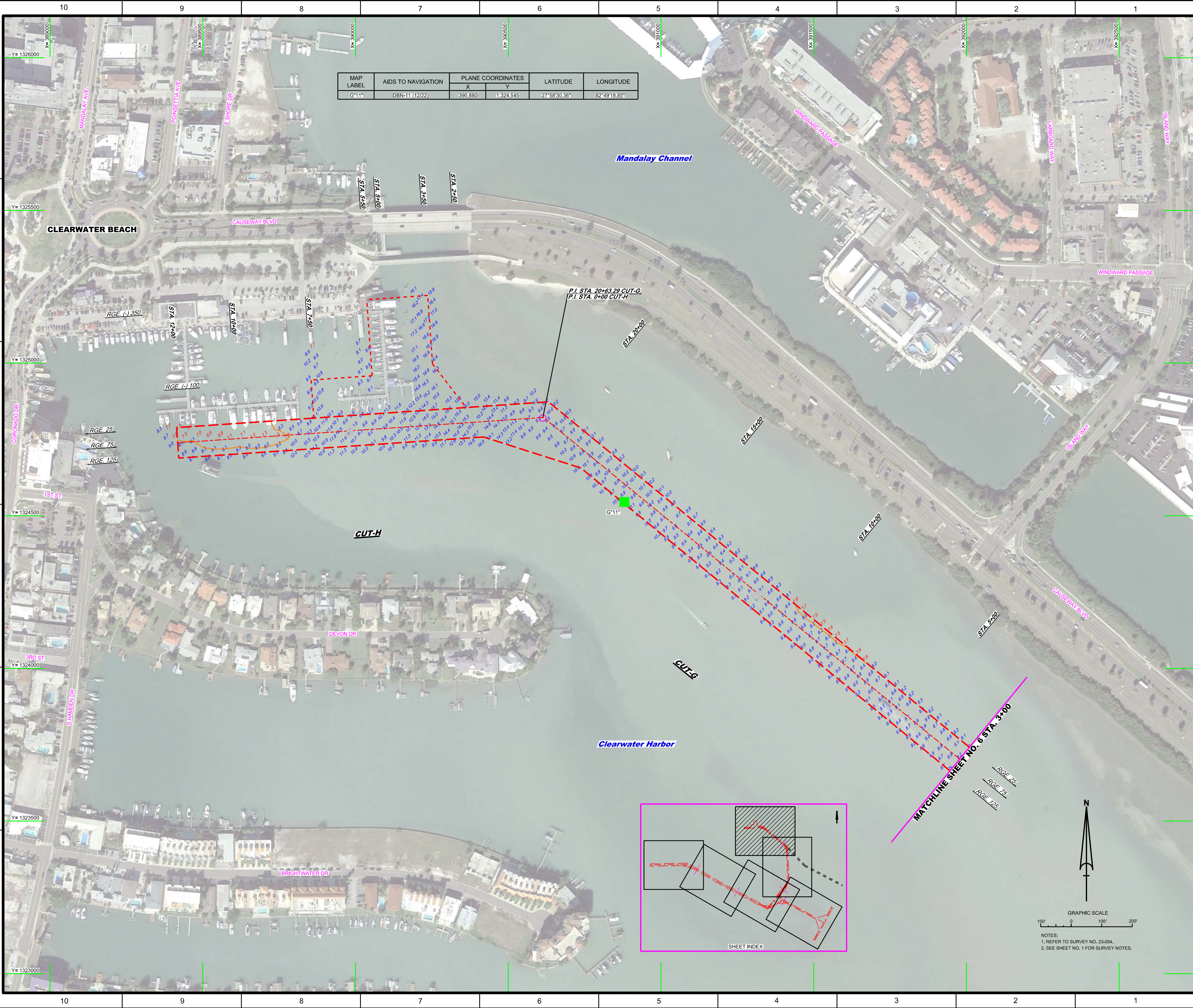













MAP LABEL	AIDS TO NAVIGATION	PLANE COORDINATES		LATITUDE	LONGITUDE
		X	Y		
G-11*	DBN-11 (12/22)	390,880	1,324,545	27°58'30.36"	82°49'18.85"

  
 US Army Corps of Engineers  
 Jacksonville District  
 SAFETY ON THIS JOB  
 DEPENDS ON YOU

---

DEPARTMENT OF THE ARMY  
 JACKSONVILLE DISTRICT, CORPS OF ENGINEERS  
 JACKSONVILLE, FLORIDA

Call by: GHR  
 Designed by: WRM  
 Drawn by: WRM  
 File No: WJ2255-NA-000000000000  
 Date: DEC 2022

CLEARWATER PASS  
 PINELLAS COUNTY, FLORIDA  
**PROJECT CONDITION SURVEY FY23  
 8 AND 10-FOOT PROJECT**  
 STA. 3+00 CUT-G THRU STA. 12+00 CUT-H  
**PLAN**

---

Scale: AS SHOWN  
 Drawing no. **7**  
 SHEET 07 OF 07

